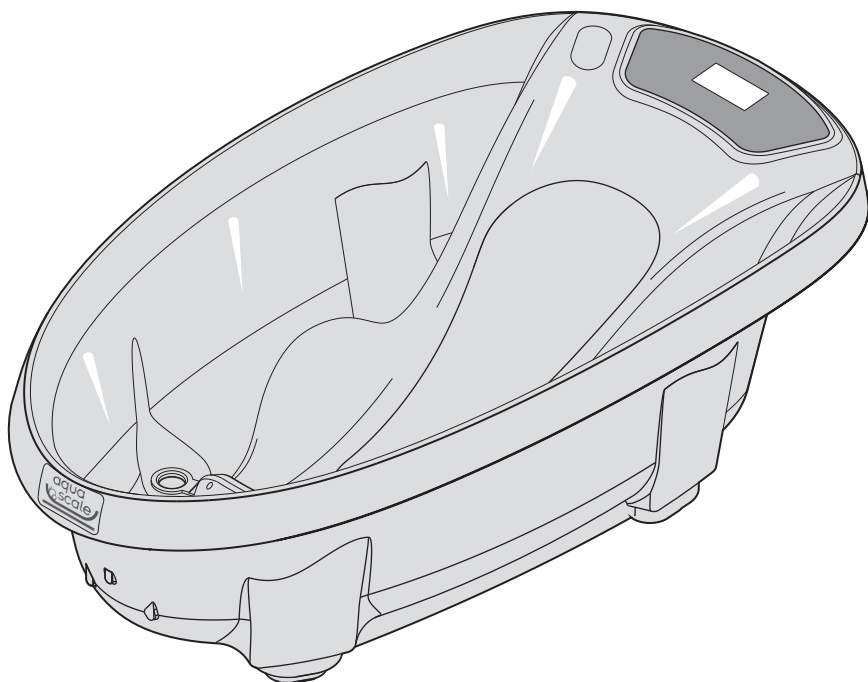




3 in 1 Digital Baby Bath



**Digital Baby Scale,
Thermometer & Bathtub**

**IMPORTANT: READ BEFORE USE
AND KEEP FOR FUTURE REFERENCE**



WARNING

To prevent drowning

- **Drowning Hazard**: Babies have **drowned** while using infant bath tubs.
- **Stay in arm's reach** of your baby.
- Use in **empty** adult tub or sink.
- Keep drain **open** in adult tub or sink.

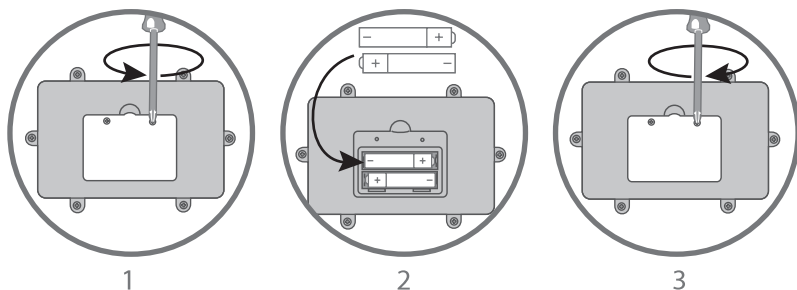
To prevent falls

- **Fall Hazard**: Babies have suffered head injuries falling from infant bath tubs.
- Place tub **only** in adult tub, sink, or on floor for safe use.
- **Never** lift or carry baby in tub.

- **DO NOT** use the product if it becomes damaged, broken, or disassembled.
- This tub is intended for babies from birth to the time just before they can sit up on their own (approximately 5-8 months old).
- Before storing, drain, clean, rinse and dry all items.
- Batteries & removable support post should be assembled by an adult.
- The bath fits only one child at a time.
- Using the Aquascale to monitor your baby's weight does not replace regular weight monitoring by a doctor/nurse/midwife/health-visitor or pediatrician.
- For infants aged 0-6 months always use the removable support post.
Check that the removable support post is firmly attached before placing the infant in the Aquascale baby bath.
- If the doorbell or phone rings, or if you need to leave the bathing area for any reason, then take the baby with you.
Babies can drown in seconds in shallow water.

Idea bath temperature for babies is between 90 and 100°F (32.2 and 37.8°C).

INSERTING THE BATTERIES:



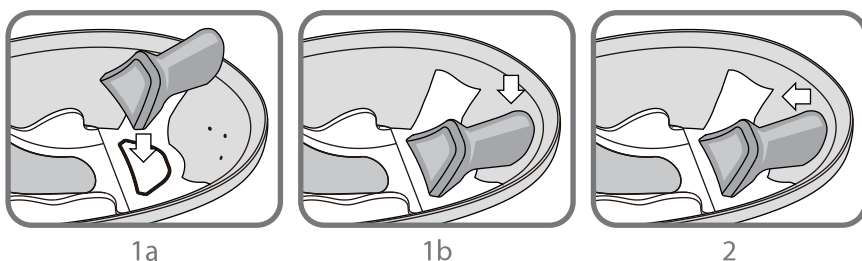
- Using a Phillips screwdriver (not supplied), unscrew the two screws on the battery cover at the rear of the LCD display.
- Insert two 1.5v AAA (LR3) batteries, ensuring the correct polarity is observed.
- Reattach the battery cover, being careful not to overtighten the screws.
- Read battery warnings.

USING THE REMOVABLE SUPPORT POST:

The Aquascale baby bath comes with a removable support post which should be used when bathing newborn or small babies (0-6 months).

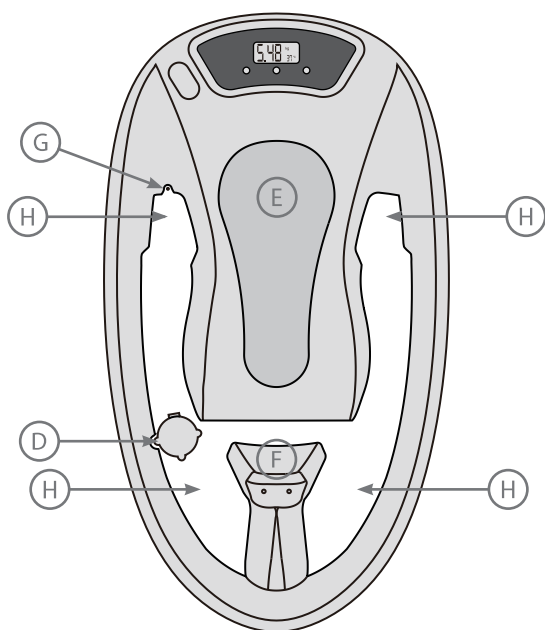
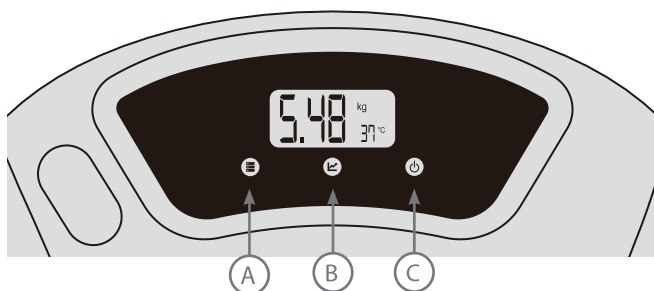
Always check that the support post is **firmly** attached.

Place your baby on the anti-slip mat. Ensure their head is out of the water. The support post should be removed once your baby is old enough to sit unaided (approximately at 6 months).



- 1a. Position the larger end of the support post into the groove in the base of the bath.
- 1b. Press down on the narrow end till it locks into place and check that the support post is securely attached.
2. To remove the support post, hold the support post at its highest point and push it away from the foot end of the bath.

OPERATING INSTRUCTIONS:



- | | |
|------------------------------|--|
| (A) Menu button | (E) Anti-slip pad |
| (B) WEIGHT button | (F) Removable support post |
| (C) On/Off/Zero scale button | (G) Temperature detector |
| (D) Drain plug | (H) Weight sensors (underside of bath) |



1



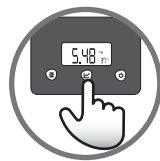
2



3



4



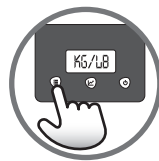
5



6



7



8

⚠ Before placing baby into the infant tub, please be sure to test the temperature of the water in, or flowing into, the infant tub.

1. Put the baby bath on a flat stable surface or use the Aquascale stand.
2. Fill the bath with water to a depth of no more than 5 inches/12.7 cm, or just enough water to cover the internal plastic parts of the bath.
Make sure the drain plug is well secured and not leaking.

Weight measurement:

Weight measurement accuracy is 0.02kg/0.04lb.

The Aquascale baby bath was developed with a measurement freeze function that allows measurement even if the water is moving.

3. Press On/Off/Zero Scale. The bath scales should automatically display zero.
4. Press On/Off /Zero Scale if the scale needs to be reset to zero.
5. Place the baby in the Aquascale baby bath and press WEIGHT to get the baby's net weight. It will calculate movements and HOLD the reading. You can weigh the baby as many times as you want when in the water. There is no need to take the baby out to reset the scales.

Memorization of a weight:

6. To save the last reading, press **MENU** for three seconds.
7. To see the saved reading, press **MENU** for three seconds.
8. To convert kg to lb or lb to kg, press one short press on the **MENU** button.

Temperature reading:

- Water temperature accuracy is 1°C/1.8°F.
- The water temperature appears on the LCD and the reading is automatically updated.
- To convert Fahrenheit to Celsius, press one short press on the **MENU** button.

TEMPERATURE WARNING

Temperature Sensor does **NOT** control the temperature of the water.
Babies are most vulnerable to drowning when under 12 months old.
Idea bath temperature for babies is between 90 and 100°F (32.2 and 37.8°C).

For maximum safety, it is recommended that your home's hot water heater be set at a temperature no higher than 120°F (49°C) at the faucet, as recommended by the American Academy of Pediatrics.

We recommend that you always check the water temperature with your hand prior to placing the infant into the tub as an added precaution.

This product has a built-in thermometer that is intended to display only the temperature of the water coming out of the faucet. It is not intended to be used as a medical thermometer.

BATTERIES

- Always take care to insert your batteries correctly, observing the plus (+) and minus (-) marks on the battery and appliance.
- Do not mix new and used batteries. Do not mix different types of batteries.
- Always remove dead batteries and all batteries if you are not going to use the product for long periods (as batteries may leak and cause damage).
- Exhausted batteries should be removed from the product and disposed of in accordance with the makers recommendations.
- Only place batteries marked alkaline in normal household waste. Never attempt to re-charge ordinary (non-rechargeable) batteries. Batteries should always be changed by an adult.
- Keep batteries out of reach of children.
- Never dispose of batteries in a fire as this may cause them to explode.
Children can choke on batteries. If swallowed seek medical advice immediately.

BATTERY DISPOSAL:

Exhausted batteries should be removed from the product and taken to a recycling facility. You can place batteries marked alkaline in a normal household waste, but it's recommended take it to a recycling facility.

Please follow these symbols on batteries, which contain harmful substances:

Pb= Battery contains Lead

Cd= Battery contains Cadmium

Hg= Battery contains Mercury



Pb



Cd



Hg



Batteries should not be considered regular waste.
Empty batteries should be returned to a recycling facility.

BATTERY WARNING

Do not mix old and new batteries.
Do not mix alkaline, standard, or rechargeable batteries.
Remove batteries when product is stored for long period of time or when
batteries are exhausted.
Dispose of exhausted batteries properly.

CARE AND MAINTENANCE:

- Always clean the bath with a non-abrasive detergent and dry with a damp cloth.
- Do not use the bath if anything is broken or missing.
- Handle with care to prevent damage to electronic scale.
- Periodically remove the infant support post to clean underneath and inside this part.



Flashes when the battery is empty. Replace battery.



Overweight. Remove the weight.

STORAGE:

- Ensure bath is clean and dry before storing.
- Do not place other items on or in the bath when storing as this could damage the sensors.
- Remove the batteries if you are not using it for long periods.



WARNING: DROWNING HAZARD
NEVER LEAVE YOUR BABY
UNATTENDED IN THE
AQUASCALE BABY BATH



Infants have **DROWNED** in infant bath tubs.

ALWAYS keep infant within adult's reach.

NEVER lift this product with child in it.

NEVER place this product in water in an adult bath tub or sink.

ALWAYS keep the drain open in the adult bath tub or sink.

ALWAYS bathe your infant in as little water as necessary.

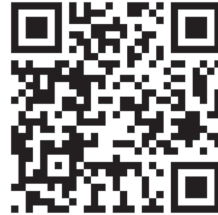
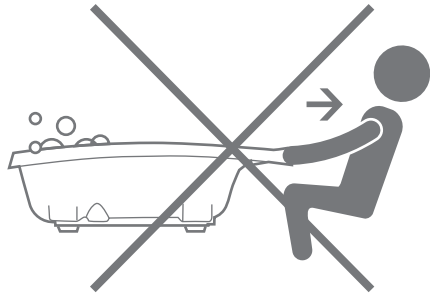
NEVER allow other children to substitute for adult supervision.

Discontinue use of product if damaged, broken, or disassembled.

Handle product with care to prevent damage to electronic scale.



DO NOT DRAG!!



Scan this code
to see the AquaScale
in Action!

IP PROTECTED
Patents, Designs & Trademarks

Baby Patent LLC
9350 Wilshire Blvd, Suite 203, Beverly Hills. CA 90212
Tel. 518-574-3012
Assembled in USA from components of U.S. and China
U.S. Patent #7999198

item: aquascale 3-in-1 scale bath and thermometer

www.babypatent.com
www.theaquascale.com